

# $^1\text{H-NMR}$

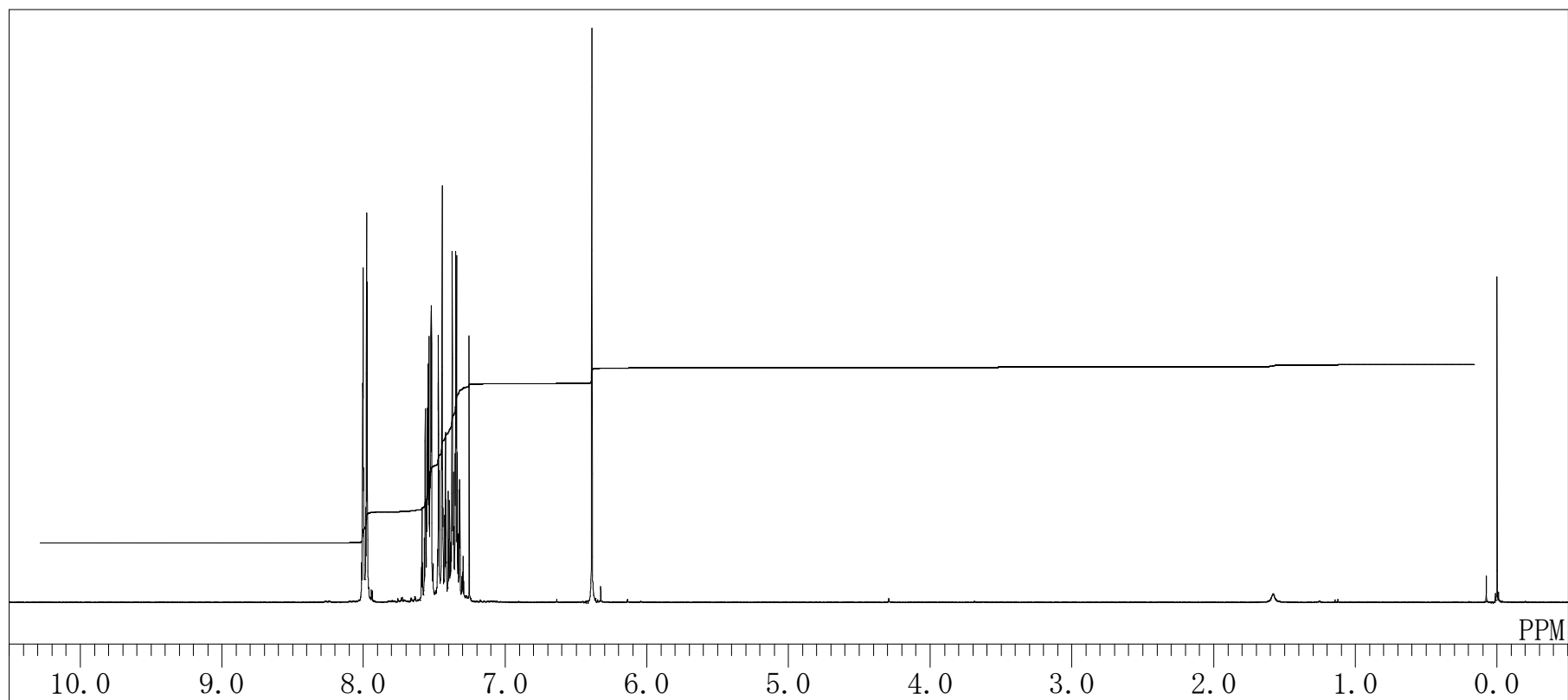
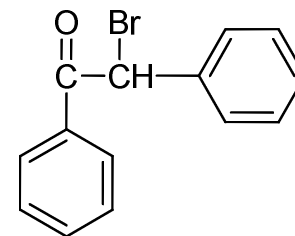
Product No. B4471

2-Bromo-2-phenylacetophenone

Solvent :  $\text{CDCl}_3$

Internal Standard :  $\text{Si}(\text{CH}_3)_4$

Measured Temperature :  $19.1^\circ\text{C}$



TOKYO CHEMICAL INDUSTRY CO., LTD.

# <sup>13</sup>C-NMR

Product No. B4471

2-Bromo-2-phenylacetophenone

Solvent : CDCl<sub>3</sub>

Internal Standard : CDCl<sub>3</sub>

Measured Temperature : 20.0 °C

