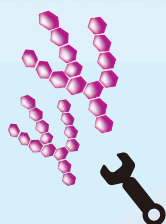


# Drug Delivery System (DDS) Products from TCI

TCI provides DDS products, including bioconjugation linkers, functional sugar chains, and fluorescence groups.

## Functional sugar chains



**Sialylglycopeptide**  
10mg [S0523]  
**Disialylnonasaccharide- $\beta$ -ethylazide**  
1mg [D4217]

## Fluorescent Labels

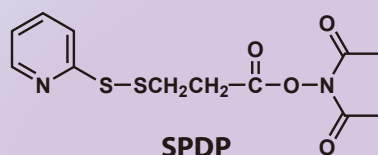
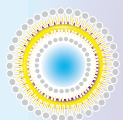


**Fluorescein Isothiocyanate**  
100m / 1g [F0784]  
**1-Pyrenebutyric Acid**  
1g / 5g [P1213]

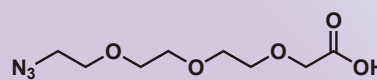


## Bioconjugation linkers

### Liposomes

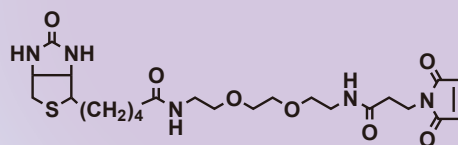


**SPDP**  
100mg / 1g / 5g [S0819]

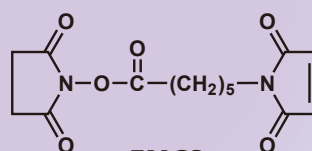


**Azido-PEG<sub>3</sub>-acetic Acid**  
1g [A2293]

### Proteins



**Maleimide-PEG<sub>2</sub>-Biotin**  
50mg [B3174]



**EMCS**  
1g / 5g / 25g [S0428]



**Doxorubicin Hydrochloride**  
25mg / 100mg [D4193]  
**Paclitaxel**  
100mg [P1632]

### Bioactive substances

**Anti-SGPG (HNK-1) Monoclonal Antibody**  
0.1mg/vial [A2706]

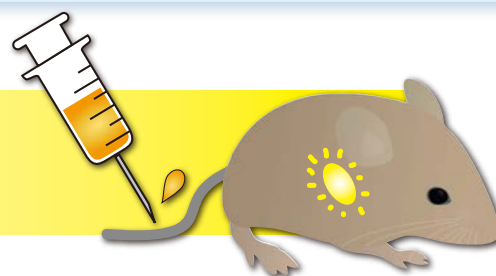
**Anti-GM1 Monoclonal Antibody**  
0.1mg/vial [A2505]



### Antibodies

## Targeting DDS

- Delivery to target site
- Fluorescence bio-imaging



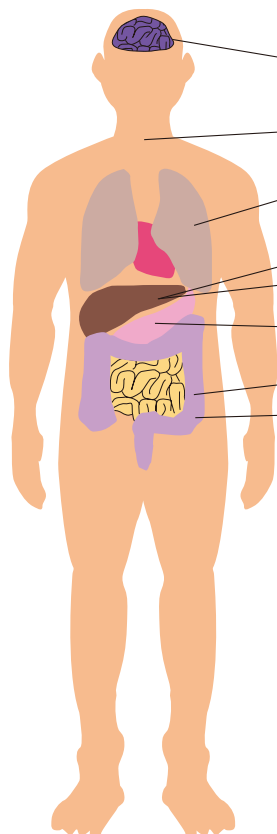
**We also do custom synthesis.**

We provide many other DDS products in addition to the above-mentioned compounds. We provide your desired combination of compounds primarily through chemical synthesis. By all means, please ask.

# Functional Sugar Chains of TCI

Our products are used for target orienting (targeting) DDS that is based on molecule recognition/cell recognition functions associated with sugar chains.

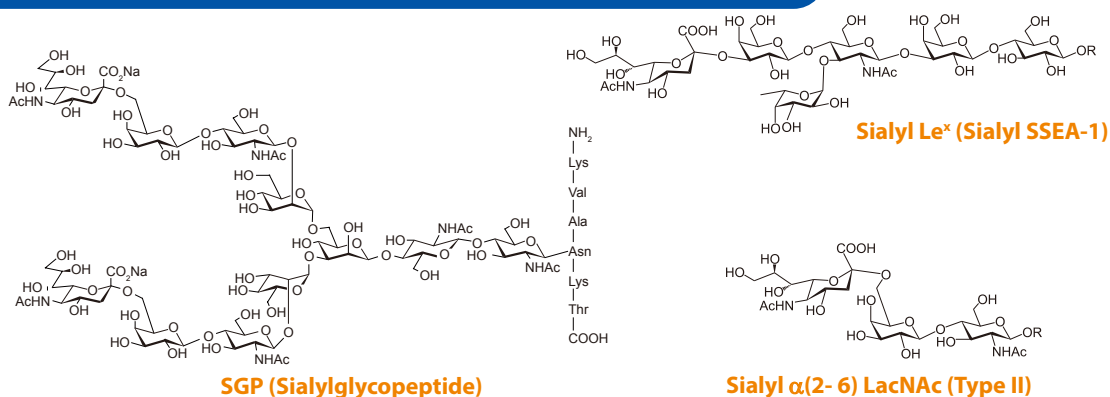
## Various functional sugar chains associated with diseases



- Alzheimer's disease: Ganglioside GM1
- Influenza: Sialic acid
- Legionella pneumonia, Chlamydial pneumonia: Mannose
- Cirrhosis: Fucose component sugar chain
- Liver cancer: Fucose component sugar chain
- Helicobacter pylori:  $\alpha$ -N-Acetylglucosamine
- Colon cancer: Mucin-type sugar chain
- O157: Globo sugar chain
- Inflammation: Sialyl Lewis X

- Sugar chains of cells recognize different things.  
→ We can target cells, depending on the tissue site.
- Cancer cells and normal tissues recognize different things.  
→ We can target only cancer.
- Cells with altered cell function recognize different things.  
→ We can target only tissues with decreased cell function.

## An example of functional sugar chains we can provide.



TCI provides various functional sugar chains associated with cell-cell interaction.

### Ordering and Customer Service

#### TCI AMERICA

Tel : 800-423-8616 / 503-283-1681  
Fax : 888-520-1075 / 503-283-1987  
E-mail : Sales-US@TCIchemicals.com

#### TCI EUROPE N.V.

Tel : +32 (0)3 735 07 00  
Fax : +32 (0)3 735 07 01  
E-mail : Sales-EU@TCIchemicals.com

#### TCI Deutschland GmbH

Tel : +49 (0)6196 64053-00  
Fax : +49 (0)6196 64053-01  
E-mail : Sales-DE@TCIchemicals.com

#### Tokyo Chemical Industry UK Ltd.

Tel : +44 (0)1865 784560  
Fax : +44 (0)1865 784561  
E-mail : Sales-UK@TCIchemicals.com

#### TCI Chemicals (India) Pvt. Ltd.

Tel : 1800 425 7889 / 044-2262 0909  
Fax : 044-2262 8902  
E-mail : Sales-IN@TCIchemicals.com

#### 梯希爱(上海)化成工业发展有限公司

Tel : 800-988-0390 / 021-67121386  
Fax : 021-6712-1385  
E-mail : Sales-CN@TCIchemicals.com

#### TOKYO CHEMICAL INDUSTRY CO., LTD.

Tel : +81 (0)3-5640-8878  
Fax : +81 (0)3-5640-8902  
E-mail : globalbusiness@TCIchemicals.com

Availability, price or specification of the listed products are subject to change without prior notice. Reproduction forbidden without the prior written consent of Tokyo Chemical Industry Co., Ltd.