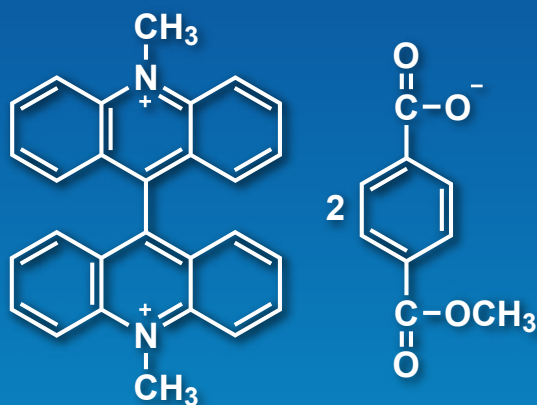


Chemiluminescence Reagent for the Detection of Intramitochondrial Superoxide



MMT
[B4339]

MMT (B4339) is a specific probe having lucigenin-like chemiluminescence to superoxide among reactive oxygen species. Since amphiphilic MMT which is less hydrophilic than lucigenin possesses cell-permeability, MMT has been applicable for the detection of intramitochondrial superoxide production.

Application

Figure shows the localization of MMT in mitochondria.

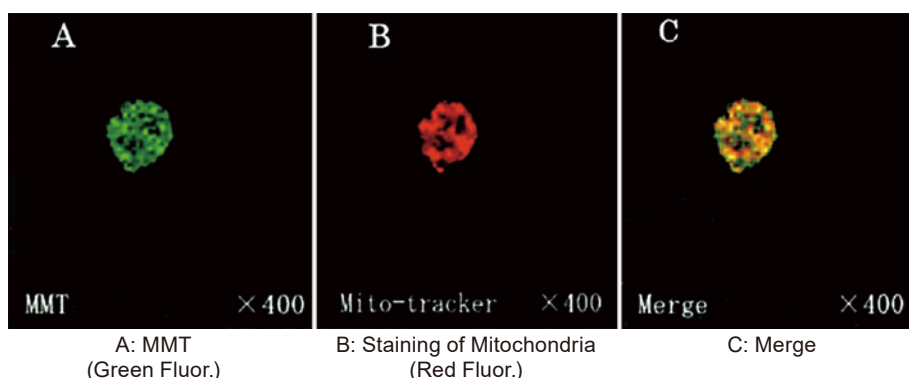


Figure. Fluorescence in mitochondria in mouse peritoneal neutrophils. (Provided by Prof. Kobayashi)

S. Sasaki, S. Yamada, M. Iwamura, Y. Kobayashi, *Free Radic. Biol. Med.* **2013**, 65, 1005.

MMT [= 10,10'-Dimethyl-9,9'-biacridinium Bis(monomethyl Terephthalate)]

100mg / 1g [B4339]

Related Product

Lucigenin

1g / 5g [B1203]

For further information please refer to our website at www.TCIchemicals.com.

chemiluminescence



Ordering and Customer Service

TCI AMERICA

Tel : 800-423-8616 / 503-283-1681
Fax : 888-520-1075 / 503-283-1987
E-mail : Sales-US@TCIchemicals.com

TCI EUROPE N.V.

Tel : +32 (0)3 735 07 00
Fax : +32 (0)3 735 07 01
E-mail : Sales-EU@TCIchemicals.com

TCI Deutschland GmbH

Tel : +49 (0)6196 64053-00
Fax : +49 (0)6196 64053-01
E-mail : Sales-DE@TCIchemicals.com

Tokyo Chemical Industry UK Ltd.

Tel : +44 (0)1865 784560
Fax : +44 (0)1865 784561
E-mail : Sales-UK@TCIchemicals.com

TCI Chemicals (India) Pvt. Ltd.

Tel : 1800 425 7889 / 044-2262 0909
Fax : 044-2262 8902
E-mail : Sales-IN@TCIchemicals.com

梯希爱(上海)化成工业发展有限公司

Tel : 800-988-0390 / 021-67121386
Fax : 021-6712-1385
E-mail : Sales-CN@TCIchemicals.com

TOKYO CHEMICAL INDUSTRY CO., LTD.

Tel : +81 (0)3-5640-8878
Fax : +81 (0)3-5640-8902
E-mail : globalbusiness@TCIchemicals.com

Availability, price or specification of the listed products are subject to change without prior notice. Reproduction forbidden without the prior written consent of Tokyo Chemical Industry Co., Ltd.