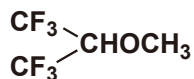


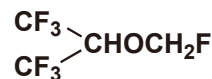
Fluorinated Ether Solvents, Glycol Ether Solvents



Bis(2,2,2-trifluoroethyl) Ether
1g / 5g
[B1293]



Hexafluoroisopropyl Methyl Ether
5g / 25g
[H1524]



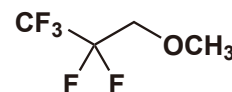
Fluoromethyl 1,1,1,3,3,3-Hexafluoroisopropyl Ether
5g
[F0691]



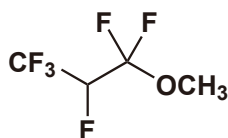
Methyl Nonafluorobutyl Ether
25g / 500g
[M1345]



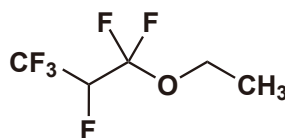
Ethyl Nonafluorobutyl Ether
(mixture of isomers)
25g / 500g
[E0528]



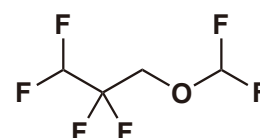
Methyl 2,2,3,3,3-Pentafluoropropyl Ether
1g
[M2500]



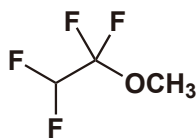
1,1,2,3,3,3-Hexafluoropropyl Methyl Ether
5g / 25g
[H1507]



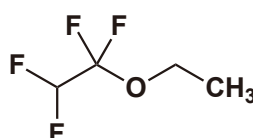
Ethyl 1,1,2,3,3,3-Hexafluoropropyl Ether
5g / 25g
[E1020]



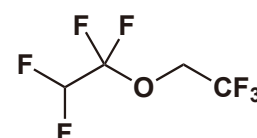
Difluoromethyl 2,2,3,3-Tetrafluoropropyl Ether
1g / 5g
[D4472]



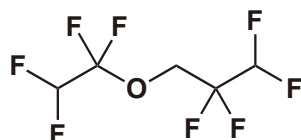
Methyl 1,1,2,2-Tetrafluoroethyl Ether
25g
[M2514]



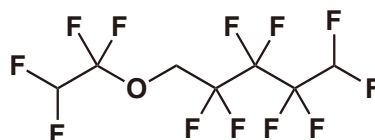
Ethyl 1,1,2,2-Tetrafluoroethyl Ether
5g / 25g
[E1019]



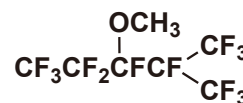
1,1,2,2-Tetrafluoroethyl 2,2,2-Trifluoroethyl Ether
5g / 25g
[T3057]



1,1,2,2-Tetrafluoroethyl 2,2,3,3-Tetrafluoropropyl Ether
5g / 25g
[T3069]

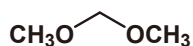


1H,1H,5H-Octafluoropentyl 1,1,2,2-Tetrafluoroethyl Ether
5g / 25g
[O0422]

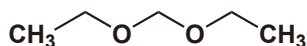


1,1,1,2,2,3,4,5,5,5-Decafluoro-3-methoxy-4-(trifluoromethyl)-pentane
25g / 500g
[D4484]

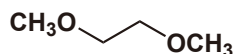
Fluorinated Ether Solvents, Glycol Ether Solvents



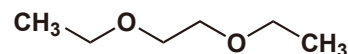
Methylene Glycol Dimethyl Ether
25mL / 500mL
[D0637]



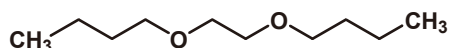
Methylene Glycol Diethyl Ether
25mL / 500mL
[D0457]



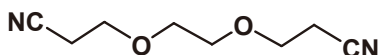
Ethylene Glycol Dimethyl Ether
25mL / 500mL
[D0634]



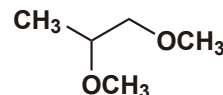
Ethylene Glycol Diethyl Ether
25mL / 500mL
[D0456]



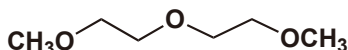
Ethylene Glycol Dibutyl Ether
25mL / 500mL
[E0217]



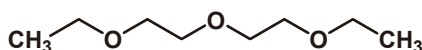
Ethylene Glycol Bis(propionitrile) Ether
25g / 100g
[E0108]



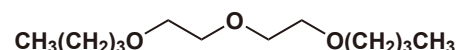
Propylene Glycol Dimethyl Ether
25mL
[D4281]



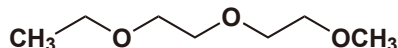
Diethylene Glycol Dimethyl Ether
25mL / 500mL
[B0498]



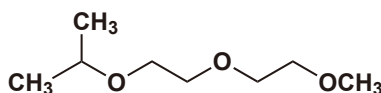
Diethylene Glycol Diethyl Ether
25mL / 500mL
[B0489]



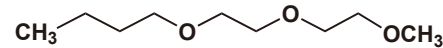
Diethylene Glycol Dibutyl Ether
25mL / 500mL
[B0828]



Diethylene Glycol Ethyl Methyl Ether
25mL / 500mL
[D4280]



Diethylene Glycol Isopropyl Methyl Ether
25mL / 500mL
[D4677]



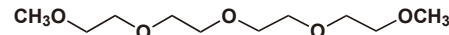
Diethylene Glycol Butyl Methyl Ether
25mL / 500mL
[D4676]



Dipropylene Glycol Dimethyl Ether
(mixture of isomers)
25mL / 500mL
[D4283]



Triethylene Glycol Dimethyl Ether
25g / 500g
[B0496]



Tetraethylene Glycol Dimethyl Ether
25mL / 500mL
[B0497]

For further information please refer to our website at www.TCIchemicals.com. 



Ordering and Customer Service

TCI AMERICA

Tel : 800-423-8616 / 503-283-1681
Fax : 888-520-1075 / 503-283-1987
E-mail : Sales-US@TCIchemicals.com

TCI EUROPE N.V.

Tel : +32 (0)3 735 07 00
Fax : +32 (0)3 735 07 01
E-mail : Sales-EU@TCIchemicals.com

TCI Deutschland GmbH

Tel : +49 (0)6196 64053-00
Fax : +49 (0)6196 64053-01
E-mail : Sales-DE@TCIchemicals.com

Tokyo Chemical Industry UK Ltd.

Tel : +44 (0)1865 78 45 60
E-mail : Sales-UK@TCIchemicals.com

TCI Chemicals (India) Pvt. Ltd.

Tel : 1800 425 7889 / 044-2262 0909
Fax : 044-2262 8902
E-mail : Sales-IN@TCIchemicals.com

梯希爱(上海)化成工业发展有限公司

Tel : 800-988-0390 / 021-67121386
Fax : 021-6712-1385
E-mail : Sales-CN@TCIchemicals.com

TOKYO CHEMICAL INDUSTRY CO., LTD.

Tel : +81 (0)3-5640-8878
E-mail : globalbusiness@TCIchemicals.com

Availability, price or specification of the listed products are subject to change without prior notice. Reproduction forbidden without the prior written consent of Tokyo Chemical Industry Co., Ltd.